

USAFE LD

**Phenolic foam
Insulation board
for cavity walls,
attics and floors**

Usafe LD is a Euroclass D phenolic foam insulation board finished on both sides with an aluminium composite foil facing.

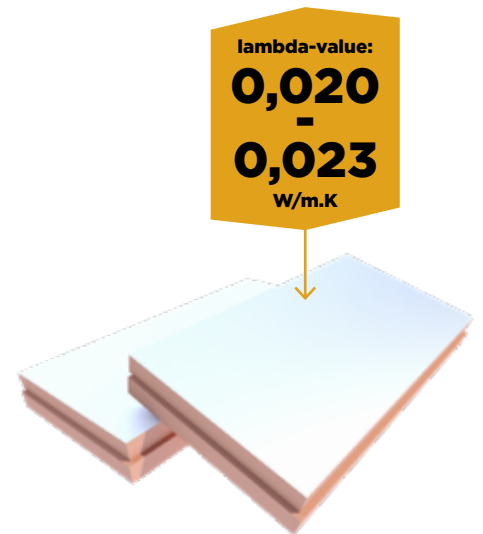
Application Insulation boards for cavity walls and attics (from the inside out) and ground supported and suspended floors

Insulation Phenolic foam (PF)
Declared lambda-value (λ_D):
0,023 W/m.K (d < 50 mm)
0,021 W/m.K (50 mm ≤ d < 100 mm)
0,020 W/m.K (d ≥ 100 mm)

Facing LD : aluminium composite foil

Dimensions Standard : 1200 x 600 mm (LS)
 Also available upon request in size
 2400 x 1200 (SE)

Edge finish Rebated (LS) on the 4 sides
 or straight on the 4 sides (SE)



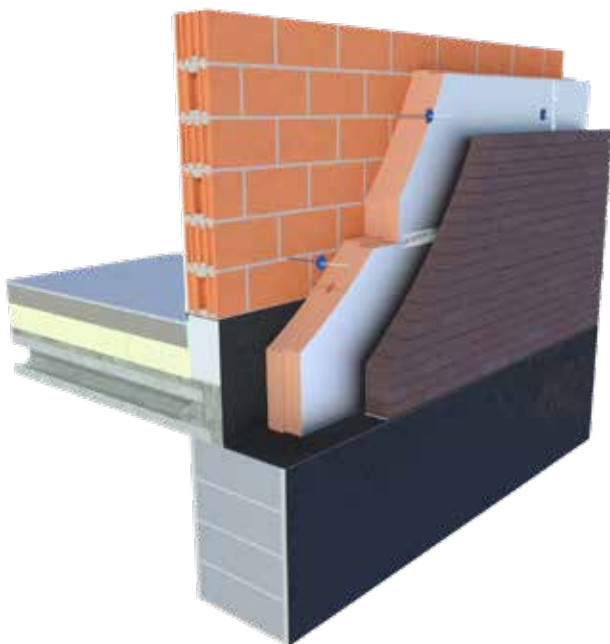
Insulation-thickness [mm]	R _{0,INSUL} value [m²K/W] CE	Boards per pack	m² per pack	Boards per pallet	m² per pallet	m² full load [= 22 pal.]	In stock	On demand*
USAFE LD (LS): 1200 x 600 mm								
25	1,05	20	14,40	200	144,00	3.168,00		✓
30	1,30	16	11,52	160	115,20	2.534,40		✓
40	1,70	12	8,64	120	86,40	1.900,80	✓	
50	2,35	10	7,20	100	72,00	1.584,00		✓
60	2,85	8	5,76	80	57,60	1.267,20	✓	
70	3,30	7	5,04	70	50,40	1.108,80		✓
80	3,80	6	4,32	60	43,20	950,40		✓
90	4,25	5	3,60	50	36,00	792,00	✓	
100	5,00	5	3,60	50	36,00	792,00	✓	
110	5,50	4	2,88	40	28,80	633,60		✓
120	6,00	4	2,88	40	28,80	633,60	✓	
130	6,50	3	2,16	36	25,92	570,24		✓
140	7,00	3	2,16	36	25,92	570,24		✓
160	8,00	3	2,16	30	21,60	475,20		✓

Insulation-thickness [mm]	R _{0,INSUL} value [m²K/W] CE	Boards per pack	m² per pack	Boards per pallet	m² per pallet	m² full load [= 11 pal.]	In stock	On demand*
USAFE LD (SE): 2400 x 1200 mm								
25	1,05	20	57,60	100	288,00	3.168,00		✓
30	1,30	16	46,08	80	230,40	2.534,40		✓
40	1,70	12	8,64	60	172,80	1.900,80		✓
50	2,35	10	7,20	50	144,00	1.584,00		✓
60	2,85	8	5,76	40	115,20	1.267,20		✓
70	3,30	7	5,04	35	100,80	1.108,80		✓
80	3,80	6	4,32	30	86,40	950,40		✓
90	4,25	5	3,60	25	72,00	792,00		✓
100	5,00	5	3,60	25	72,00	792,00		✓
110	5,50	4	2,88	20	57,60	633,60		✓
120	6,00	4	2,88	20	57,60	633,60		✓
130	6,50	3	2,16	18	51,84	570,24		✓
140	7,00	3	2,16	18	51,84	570,24		✓
160	8,00	3	2,16	15	43,20	475,20		✓

* Minimum order quantities and special conditions upon consultation

TECHNICAL PROPERTIES

Declared thermal conductivity : λ_D according to EN 13166:2012+A2:2016	0,023 W/m.K (d < 50 mm) 0,021 W/m.K (50 mm ≤ d < 100 mm) 0,020 W/m.K (d ≥ 100 mm)
Compressive strength at 10% deformation : CS(10/Y)100 according to EN 826	≥ 100 kPa (1,0 kg/cm ²)
Closed cell content	≥ 90%
Dimensional stability 48h, 70°C, 90% RH 23°C, 50% RH	DS(70,90)3: $\Delta\epsilon_{l,b} \leq 1,5$ / $\Delta\epsilon_d \leq 1,5$ DS(N): $\Delta\epsilon_{l,b} \leq 0,5$ / $\Delta\epsilon_d -$
Deformation under compressive load and temperature conditions	DLT(1) ≤ 5%
Density of the PF foam	36,5 kg/m ³ ± 1,5 kg/m ³
Reaction to fire class	D-s1, d0 according to EN 13501-1 B-s1, d0 (End-Use Eternit cladding, contact Unilin for the conditions of application)



Certificates	
CE	λ 0,020 - 0,023 W/m.K
DOP	USAFE LD v1
EPD	BES 6001 RS0039

Nr. EX-UK-21-1

For stock- and delivery conditions: inform with UNILIN, division insulation.

UNILIN, division insulation - Waregemstraat 112 - B-8792 Waregem - T +32 56 73 50 91 - F +32 56 73 50 90
E info.insulation@unilin.com - W www.unilininsulation.com - H.R Kortrijk 87153 - VAT BE 0405 414 072