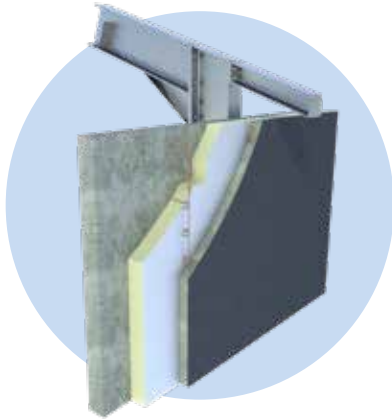


Insulation board for prefab

CONCRETE L is a PIR insulation board finished on both sides with a multilayer gastight laminate facer, alkali-(concrete) resistant.



Application Insulation boards for prefab concrete elements

Insulation Polyisocyanurate (PIR)
Declared lambda-value (λ_D) : 0,022 W/m.K

Facing L : multilayer gastight laminate, alkali-(concrete) resistant

Dimensions Standard : 2400 x 1200 mm

Edge finish Straight on the 4 sides



| Insulation-thickness [mm] | R _{D INSUL} value [m ² K/W] CE | Boards per pack | m ² per pack | Boards per pallet | m ² per pallet | m ² full load [= 11 pal.] | In stock | On demand* |
|------------------------------------|--|-----------------|-------------------------|-------------------|---------------------------|--------------------------------------|----------|--------------------------|
| CONCRETE L : 2400 x 1200 MM | | | | | | | | |
| 30 | 1,35 | 16 | 46,08 | 80 | 230,40 | 2.534,40 | | from 1000 m ² |
| 40 | 1,80 | 12 | 34,56 | 60 | 172,80 | 1.900,80 | | from 1000 m ² |
| 50 | 2,25 | 10 | 28,80 | 50 | 144,00 | 1.584,00 | | from 1000 m ² |
| 60 | 2,70 | 8 | 23,04 | 40 | 115,20 | 1.267,20 | | from 1000 m ² |
| 70 | 3,15 | 7 | 20,16 | 35 | 100,80 | 1.108,80 | | from 1000 m ² |
| 80 | 3,60 | 6 | 17,28 | 30 | 86,40 | 950,40 | | from 1000 m ² |
| 90 | 4,05 | 5 | 14,40 | 25 | 72,00 | 792,00 | | from 1000 m ² |
| 100 | 4,50 | 5 | 14,40 | 25 | 72,00 | 792,00 | | from 1000 m ² |
| 110 | 5,00 | 4 | 11,52 | 20 | 57,60 | 633,60 | | from 1000 m ² |
| 120 | 5,45 | 4 | 11,52 | 20 | 57,60 | 633,60 | | from 1000 m ² |
| 130 | 5,90 | 3 | 8,64 | 18 | 51,84 | 570,24 | | from 1000 m ² |
| 140 | 6,35 | 3 | 8,64 | 18 | 51,84 | 570,24 | | from 1000 m ² |

* Unilin reserves the right to charge and deliver a maximum of 5% overproduction

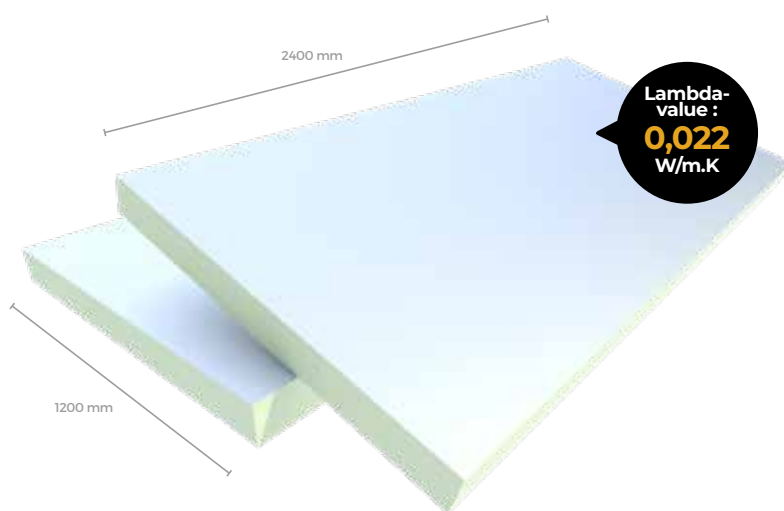


Technical properties

| | |
|---|--|
| Declared thermal conductivity : λ_D according to EN 13165 : 2015 | 0,022 W/m.K |
| Compressive strength at 10% deformation: CS(10/Y)150 according to EN 826 | ≥ 150 kPa (1,5 kg/cm ²) |
| Tensile strength perpendicular to the faces | TR80 ≥ 80 kPa |
| Dimensional stability 48h, 70°C, 90%RH 48h, -20°C | DS(70,90)3 : $\Delta e_{l,b} \leq 2$ / $\Delta e_{d} \leq 6$ DS(-20,-)1 : $\Delta e_{l,b} \leq 1$ / $\Delta e_{d} \leq 2$ |
| Deformation under compressive load and temperature conditions | DLT(2) $\leq 5\%$ |
| Density of the PIR foam | 32 kg/m ³ \pm 3 kg/m ³ |
| Water vapour transmission resistance of the PIR foam : μ | 50-100 |
| Reaction to fire class | F according to EN 13501-1 |
| Long term water absorption | WL(T)2 according to EN 13165 < 2% |

Certificates

| | |
|-----|--------------------------|
| CE | λ 0,022 W/m.K |
| DOP | UTHERM CONCRETE L v1 |
| EPD | EPD-UNI-20140123-IBA1-EN |



Nr. EX-ENG-19-2

For stock- and delivery conditions: contact UNILIN, division insulation.

UNILIN, division insulation - Waregemstraat 112 - B-8792 Waregem – T +32 56 73 50 91 – F +32 56 73 50 90

E info.insulation@unilin.com – W www.unilininsulation.com – H.R Kortrijk 87.153 – VAT BE 0405 414 072

